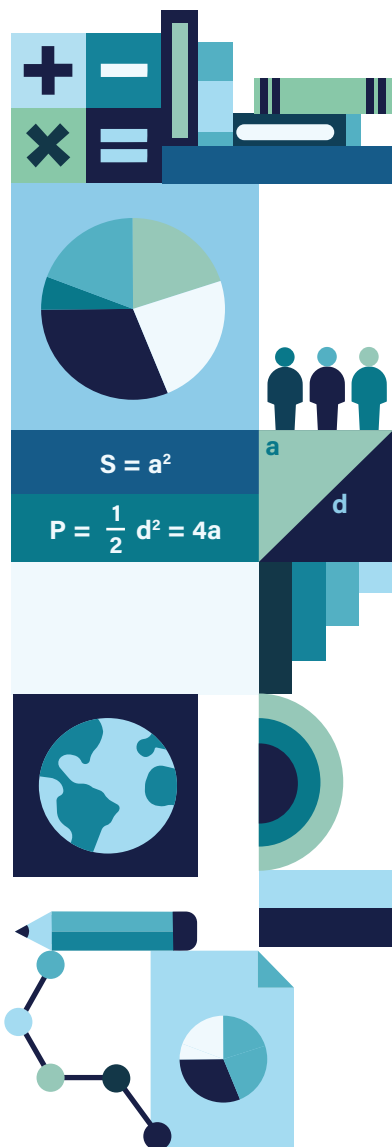


GSAM[®]

Gifted Student Ability Measure



Australian designed and produced, GSAM enables accurate and timely identification of Gifted and High Performance students.

GSAM is designed to enable placement in extension classes and gifted programs. Alternatively, it can identify students for extension and enrichment programs alongside mainstream classes.

GSAM[®]

- Developed by a highly skilled Australian psychometrician and test item writers.
- Rigorous test development processes to ensure validity and reliability.
- Designed to accurately identify students in the top 10%-15% of population.
- Designed to discriminate up to the top ½% of the population.
- Trialled and refined on over 3 000 Australian students.
- Focus on higher order thinking and problem solving skills.
- Above current year level to better discriminate between highly able students.
- Normed on representative Australian students.
- Are secure – preventing the likelihood of coaching.
- Are administered by AAS staff to protect security and validity.
- Provide unique reporting features via our Online Reporting System.

The Tests

These tests focus on a student's ability to think clearly and reason with complex issues rather than replicate taught knowledge. Students need to demonstrate how they engage with different stimulus and problem solving.

Ability and Achievement

Students undertake four tasks for this assessment:

Reasoning Ability

Comprising both Verbal and Non Verbal items.

70 questions

Mathematics

With a focus on problem solving.

45-50 questions

Reading Comprehension

Focus on interpretation, inference and synthesis.

55-60 questions

Written Expression

Narrative or persuasive depending on the School's choice.

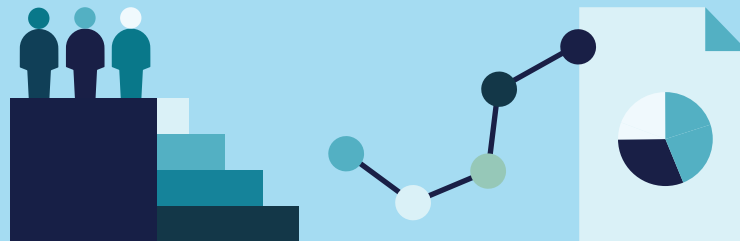
250-300 words

Testing is held in two sessions over one morning.

Total test time including directions and a recess break is

3 hours 45 minutes.

Special provisions can be catered for eg large print etc.



Reporting to Schools

- Results reported via secure Online Reporting.
- Standardised results compared to representative Australian populations.
- Overall rank order and rank in each skills area.
- Detailed diagnostic item analysis in Mathematics, Reading Comprehension and Writing, to guide student development.
- Provides comparative data on cohorts over time.
- Systematically select groups or create classes, using our unique class formation program.
- Results delivered within 10 working days.

Reporting to Parents

Schools may elect to report to parents via a customised report specific to their own school.

To obtain Sample Reports please contact our office.

School Options

Schools may choose from 2 options:

Four tests

- Reasoning Ability
- Mathematics
- Reading Comprehension
- Written Expression

Three tests

As above but excluding Written Expression.

*Minimum cohort numbers may apply

These prices are fully inclusive of:

- Test administration by AAS staff.
- Scoring and reporting.
- AAS support to assist school staff with test interpretation and uses.

Procedures leading to test day

- AAS will send a template to the School requesting name and date of birth of applicants.
- The School returns this to AAS no later than 7 days prior to testing.
- AAS staff allocated to this day and the School notified.

On test day

- The School to have testing venue set up in exam mode.
- AAS staff will arrive at 8:00am to begin setting out testing material.
- Tests commence at 8:45 am
- Recess 10:40 am
- Session 2 starts 11:05 am
- Session concludes 12:30 pm

For further information and a demonstration please contact;

Robert Allwell

robert.allwell@academicassessment.com.au

Sara Ratner

sara.ratner@academicassessment.com.au

Telephone

Sydney 02 9904 4933

Melbourne 03 9866 3603